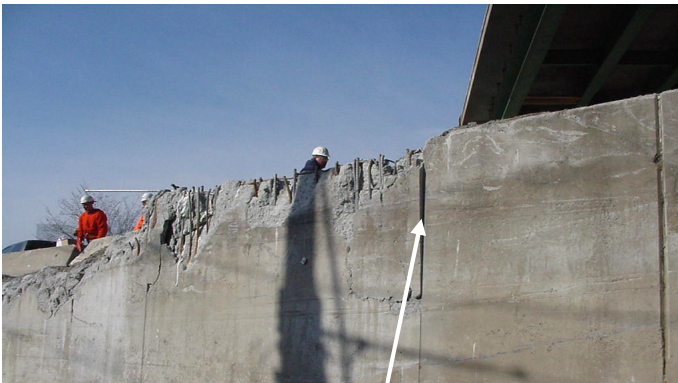


## Daigh Company Job Stories #19b Wall Trimming

Warwick Rhode Island, new bridge construction Partial demo of wall on highway bridge for access fora Caisson Rig. Gas main was behind wall and local gas company was on strike. Sawcut at limits of break and cut rebar which included imbedded 3 ft square column rebar. Trimmed a crescent shaped piece out of wall and left 1 ft thick section. Loaded Rock Splitting Mortar in 8 hour delays to keep from breaking in wrong direction.



Drilling 16 ft deep with Tamrock 300 Commando. Cracks in wall, note sawcut, Rock Splitting Mortar pushed concrete out about 1 inch. Pulling over with excavator. Slab on ground. Note Rock Splitting Mortar in holes and how concrete broke along line of holes.



Daigh Company, Inc. : 2393 Canton Hwy, Ste 400; Cumming, GA 30040  
Office 770 886 4711 Fax 770 887 3783  
[www.daighcompany.com](http://www.daighcompany.com) [sales@daighcompany.com](mailto:sales@daighcompany.com)